

Inaugural LOICZ II Open Science Meeting, Egmond aan Zee, 27-29 June 2005

Changing human demands in marine areas: Implications for governance and use of integrated assessment concepts

Dr. Andreas Kannen



***Forschungs- und Technologiezentrum Westküste, Büsum (FTZ)
Zentrale Einrichtung der Christians-Albrecht Universität Kiel***

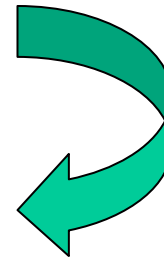




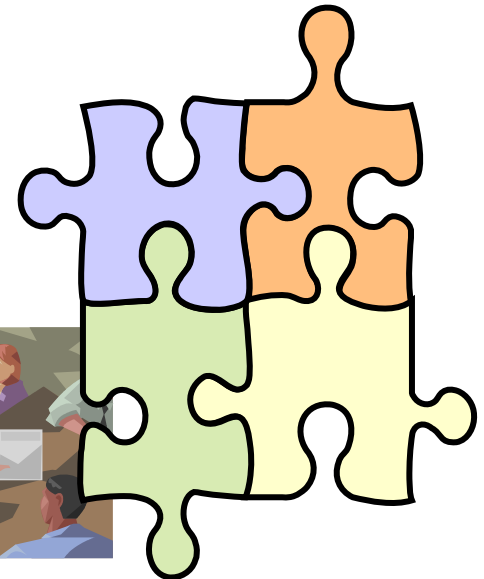
Changing human demands



governance needs

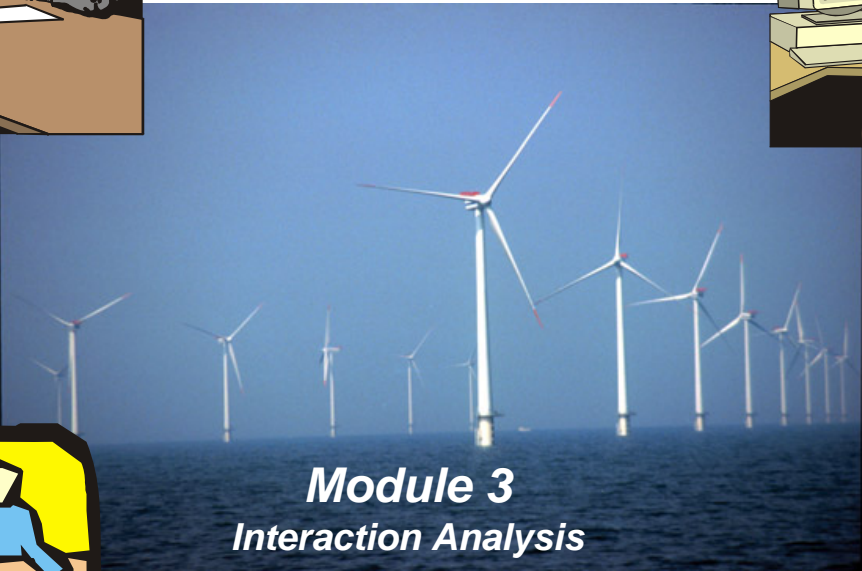


integrated assessment



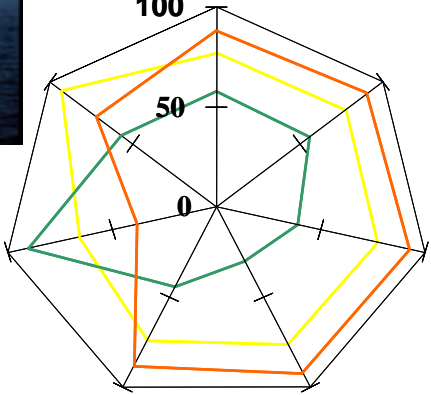


Zukunft Küste – Coastal Futures



Module 1
Coordination & Synthesis

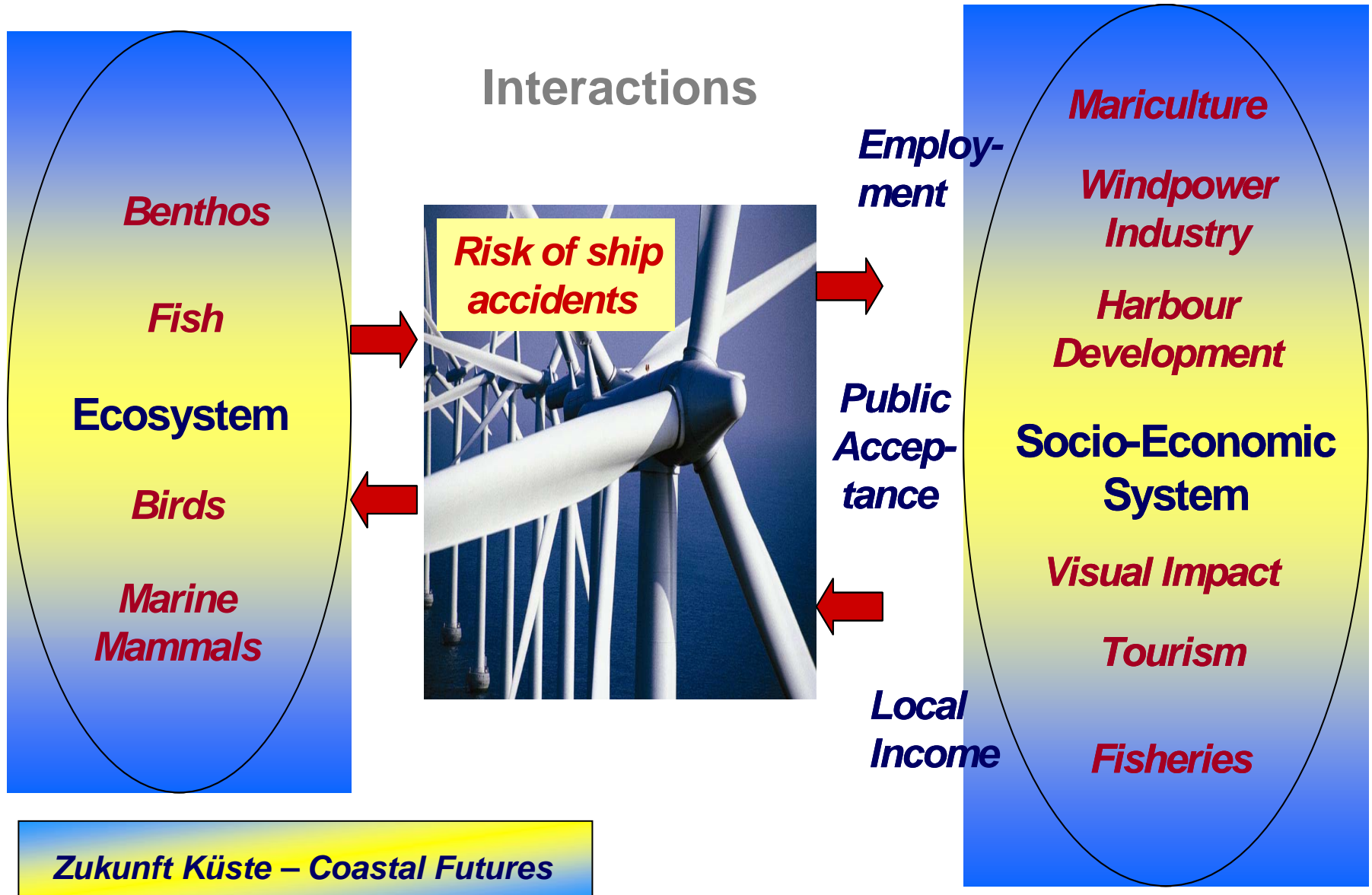
Module 2
Integrative Assessment



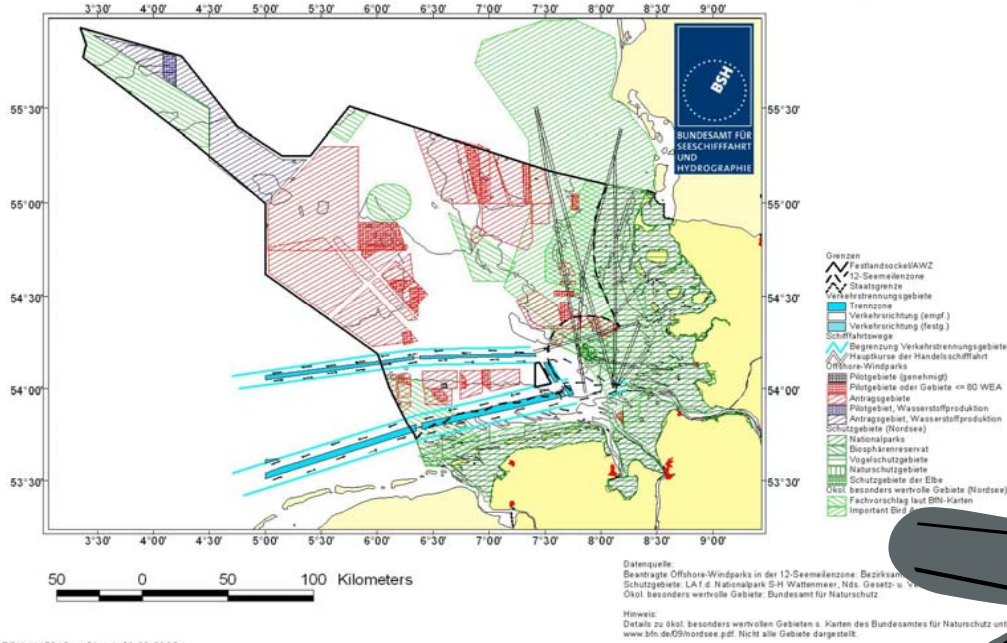
Module 3
Interaction Analysis

Module 4
Communication & Networking

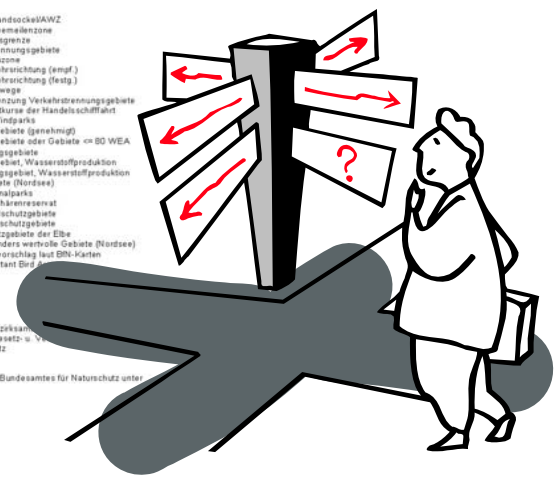




Nordsee - Beantragte Offshore-Windparks und ökologische Schutzgebiete



BSH / M5212 - Stand: 20.08.2002



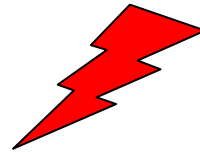
Guiding principle

Polyculture of resource and space use?



Managing change across scales

**Energy policy,
New jobs,
Investments,
Marine Technology,
Climate change**



**Shipping safety,
Economic risks and
trade-offs,
Regional identity,
Traditional uses,
Ecological risks**



**social, economic and ecological systems analysis (cumulative impacts),
compatibility analysis, information strategies, co-operation models**



Scenarios in Coastal Futures

First Step

- 13 Storylines in the frame of 5 families;
 - DPSIR as structure to describe the scenarios
 - Ocean and coast als **Natural area, energy production area, industrial area, leisure area, traffic area;**

Second Step

- Reduction into 5 storylines for more detailed assessment;
 - Each family represented, different intensities for offshore wind energy production represented



Modelling und assessing ecological, economic and societal impacts



Awareness for complexity, tool for dialogues about development directions, stimulate discussions



Conclusions

- **Comprehensive, but policy relevant assessment of coastal zone as base;**
- **Longterm perspective into the future;**
- **Coastal Futures is a test to**
 - ➔ **translate governance needs into science and later**
 - ➔ **science into policy dialogues**

Thank you very much for your attention

kannen@ftz-west.uni-kiel.de

Zukunft Küste – Coastal Futures



Bundesministerium
für Bildung
und Forschung