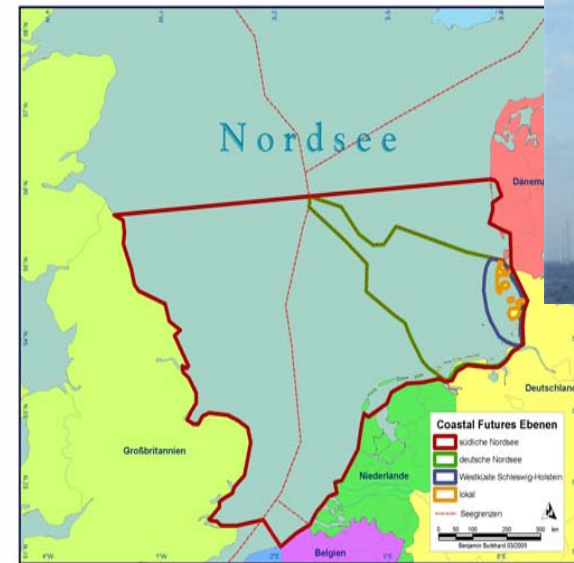
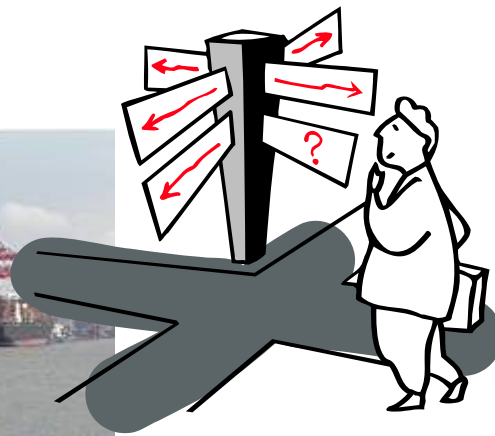


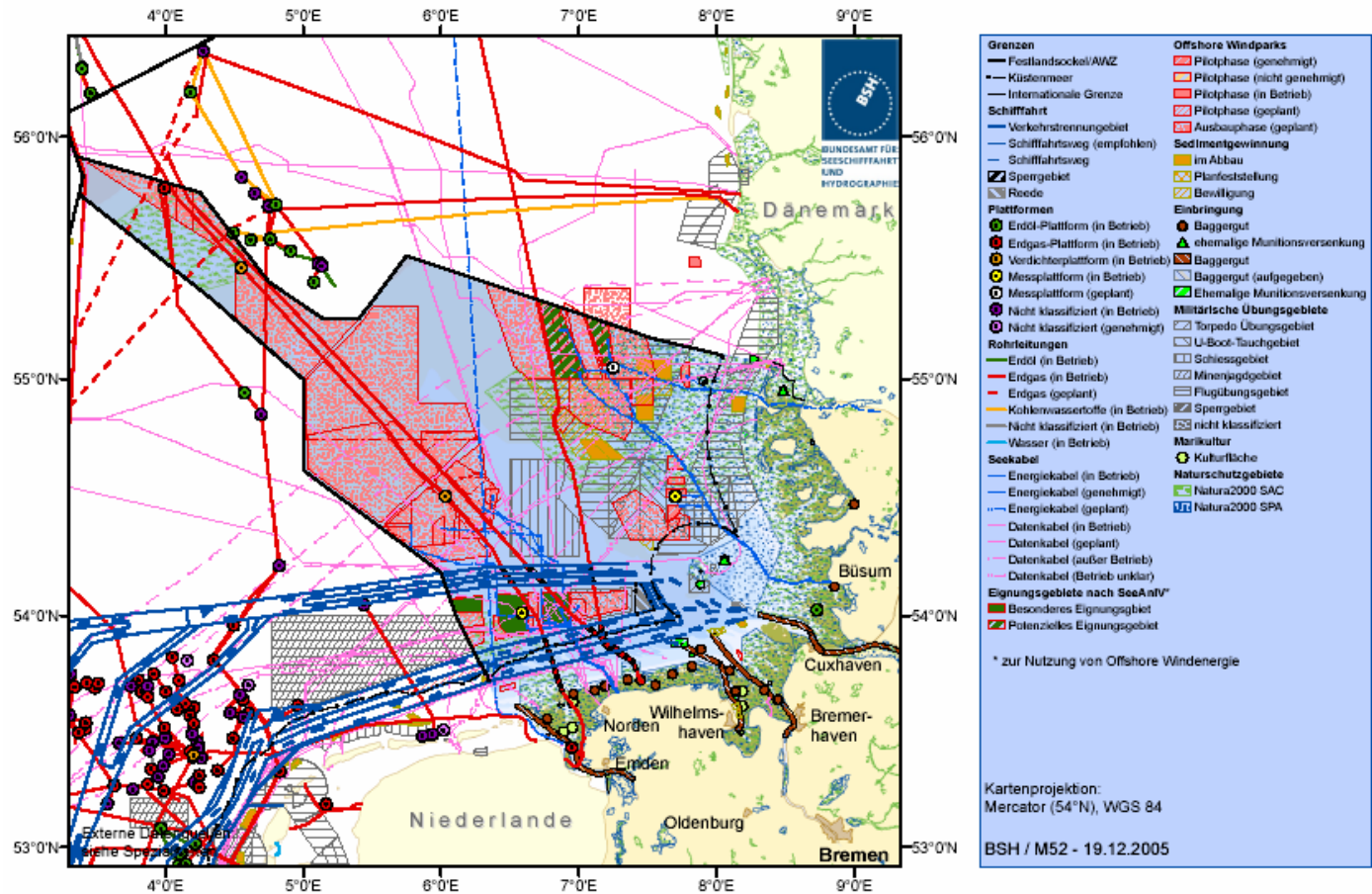
# Sea use change in the German North Sea: Assessment and implications for planning and management

Andreas Kannen  
Forschungs- und Technologiezentrum Westküste



# Coastal and marine areas in Germany

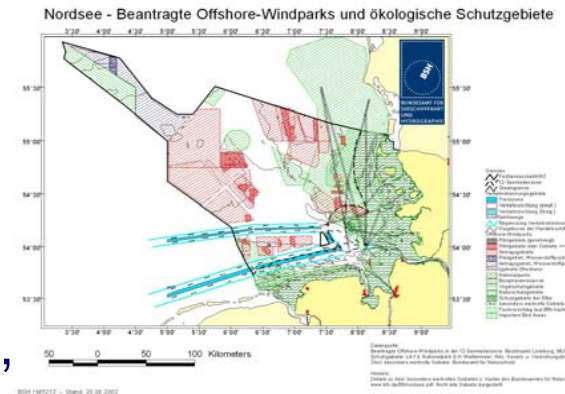
Polyculture of resource and space use?



## Use pattern of the future?

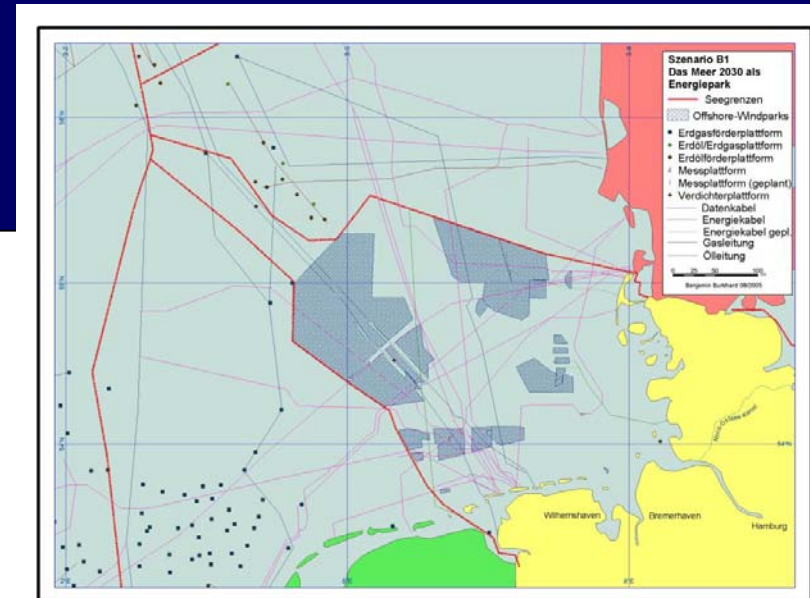
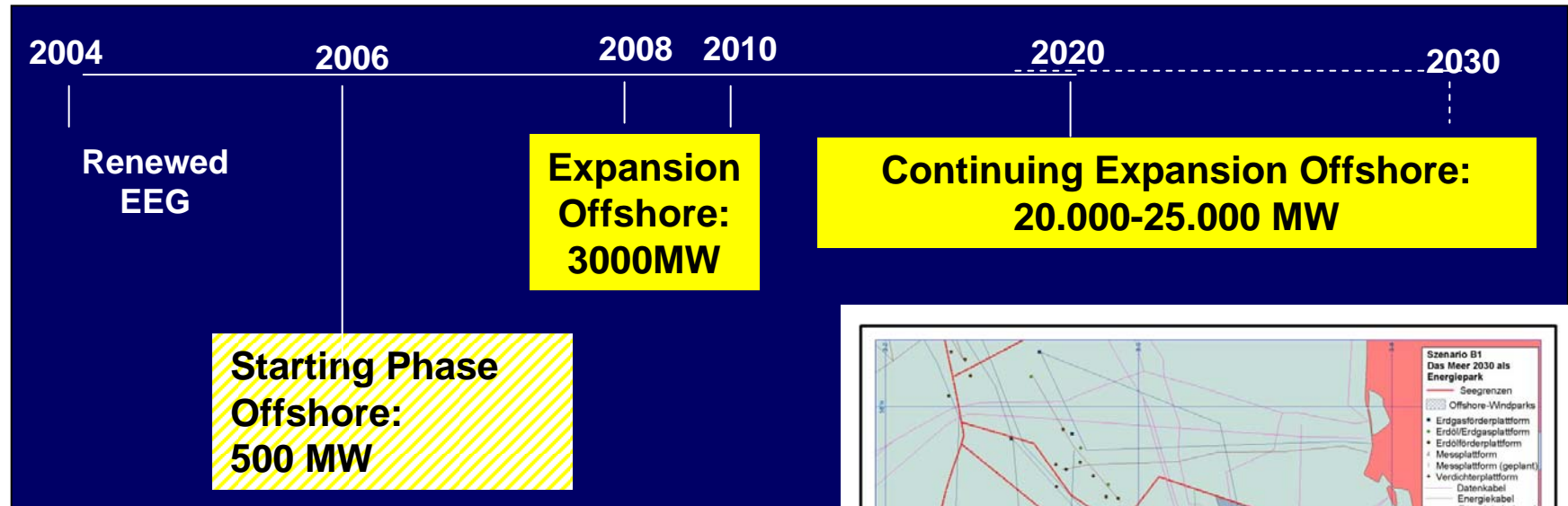
### Scenarios and development directions

- Sea and coast as **natural** area,
- Sea and coast as **tourism and leisure** area,
- Sea and coast as **energy production** area (renewables),
- Sea and coast as **industrial** area,
- Sea and coast as **shipping** area;



➔ Modelling und assessing ecological, economic and social impacts

➔ Dialogue concerning development directions

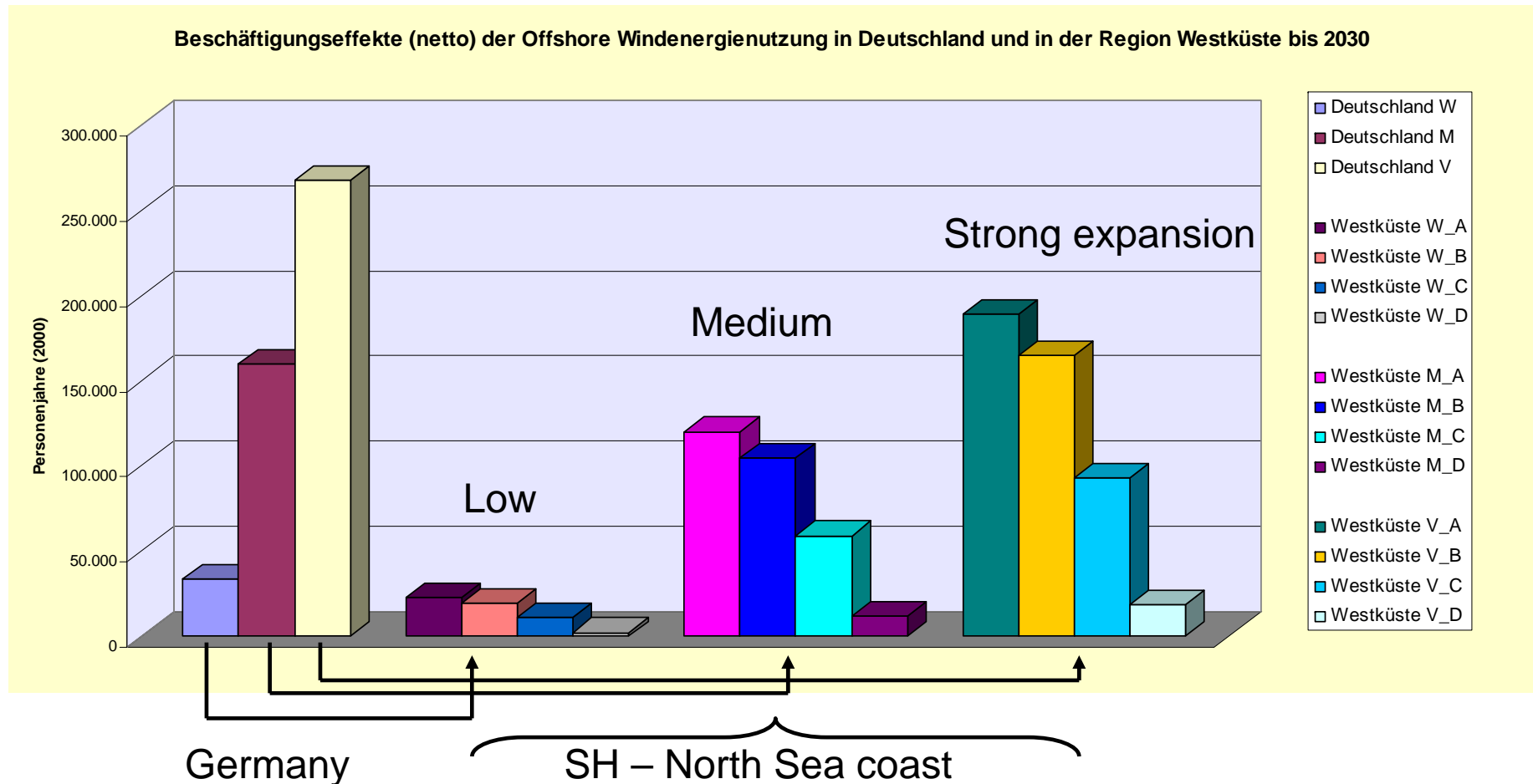


- Chance for development for coastal areas
- Existing economic clusters and networks



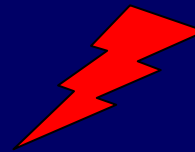
## Regional employment impacts of offshore wind farms

Beschäftigungseffekte (netto) der Offshore Windenergienutzung in Deutschland und in der Region Westküste bis 2030



## Argumentations for and against wind farms

Sustainable energy policy  
Impacts of climate change  
Employment



Regional Identity  
Traditional Uses  
Ecological Risks

Symposium „Linkages between German Coastal Research and LOICZ, Geesthacht, 14 June 2006



Prozentuale Besetzung der Themen	Öffentliche Dokumente (OD)		Stellungnahmen Genehmigungsverfahren (GVD)		Fragebogen	
Klimaschutz	3,3	😊	0,2	😊	0,2	😊
Energiepolitik	7,9	😊	2,1	😊	23,2	😊
Hafenentwicklung	0,6	😊	0,2			
Wirtschaftsfaktor und Arbeitsplätze	9,0	😊	0,2	😊	5,2	😊
Naturschutz	13,0	😞	20,2	😞	15,1	😞
Landschaftsästhetik	1,5	😞	5,3	😞	21,8	😞
Fischerei	0,3		6,3	😞		
Schiffsicherheit	6,1	!	19,4	😞!	3,6	😞
Tourismus	2,5	😞!	1,3	😞		
rechtliche Fragen	1,3	!	1,3	!		
Planungs- und Genehmigungsverfahren	14,1	!	24,8	!		
Machbarkeit/Technik/Finanzierung	18,0	!	15,8	!	4,4	😞😊
Wirtschaftlichkeit	7,5	!	2,1	!	4,6	😞
Politik	3,0	!			0,4	😞
Wissenschaft	7,0	!	0,2	!		
Sonstiges	4,7	😊	0,6	!	0,6	

😊 Positive

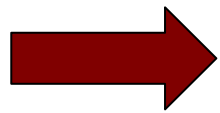
😞 negative

! Articulated demands



## Demands concerning planning and ICZM

- Use patterns should be in the focus



**Spatial planning and ICZM need to link international / national AND local interests**

- Dialogue between decision making scales
- Transparency
- Scenarios / development directions und visions als base for consensus



***Thank you very much for your attention***

***kannen@ftz-west.uni-kiel.de***

***Zukunft Küste – Coastal Futures***